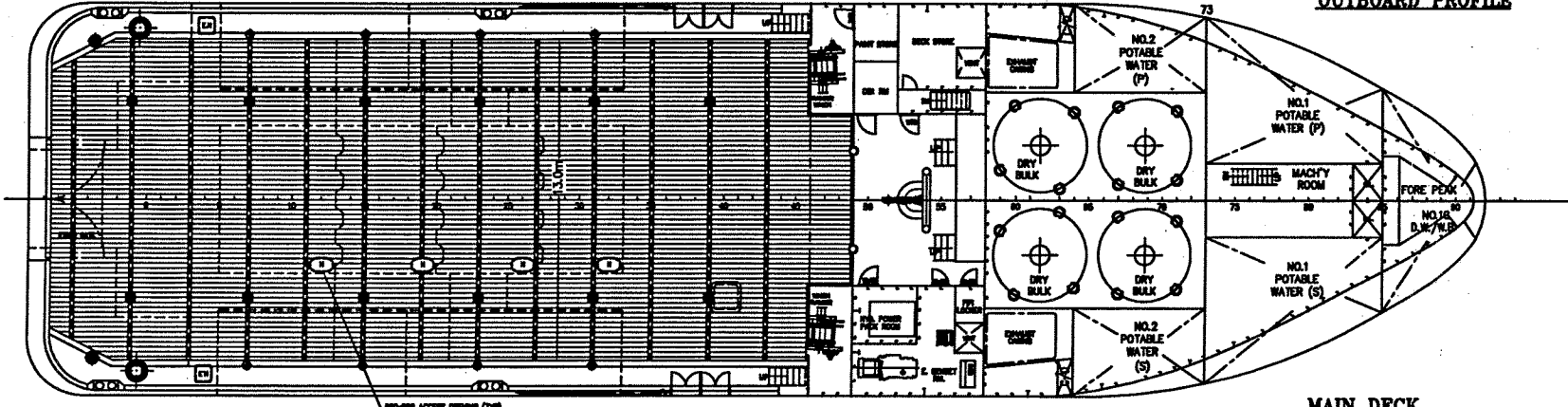
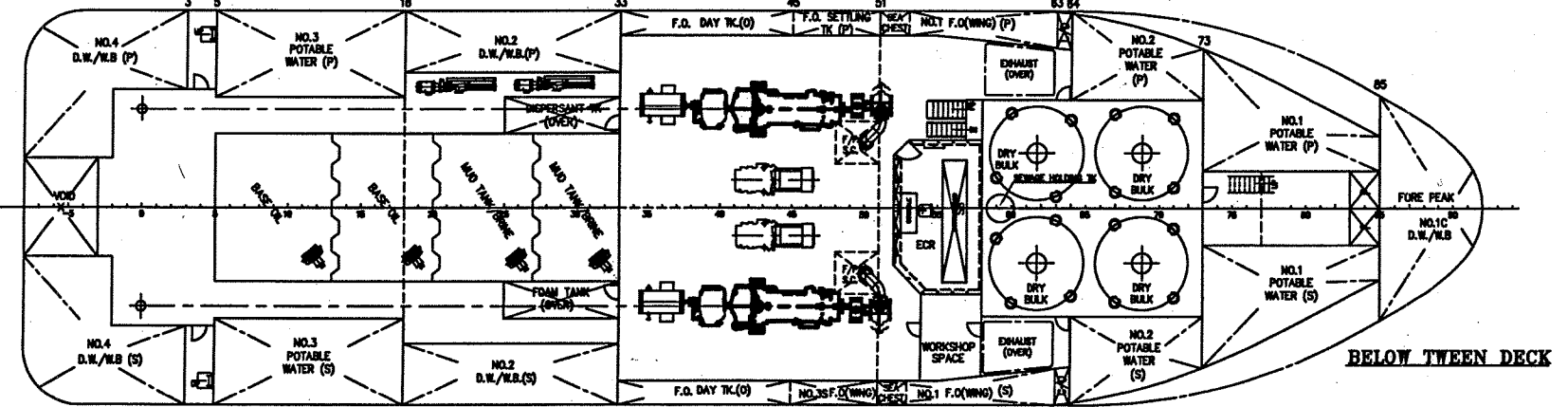


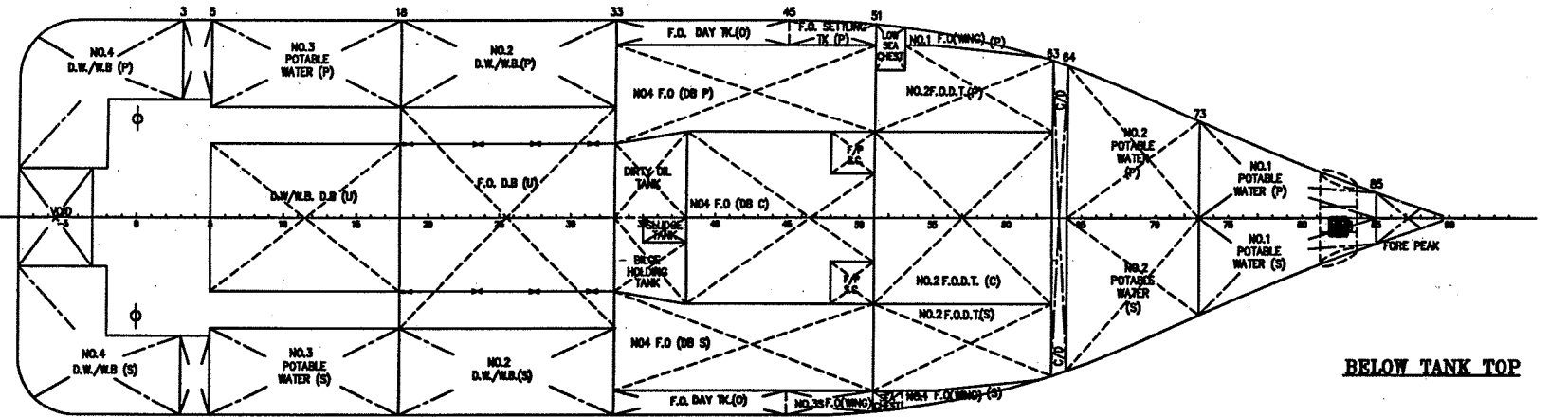
OUTBOARD PROFILE



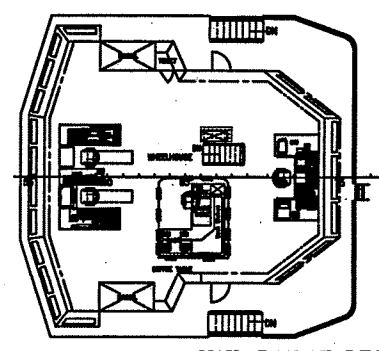
MAIN DECK



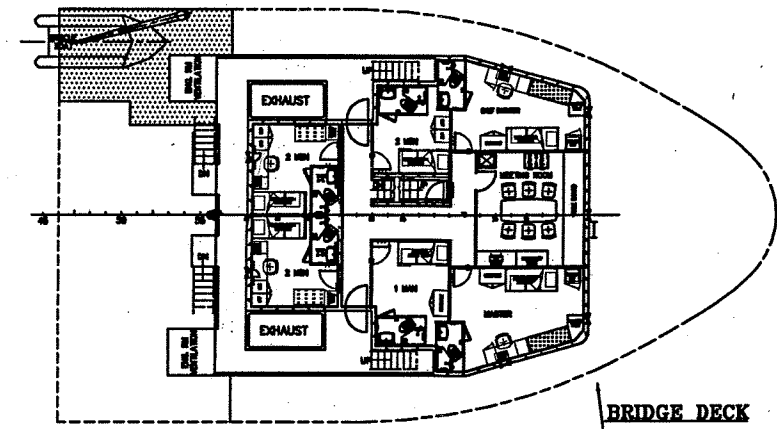
BELOW TWEEN DECK



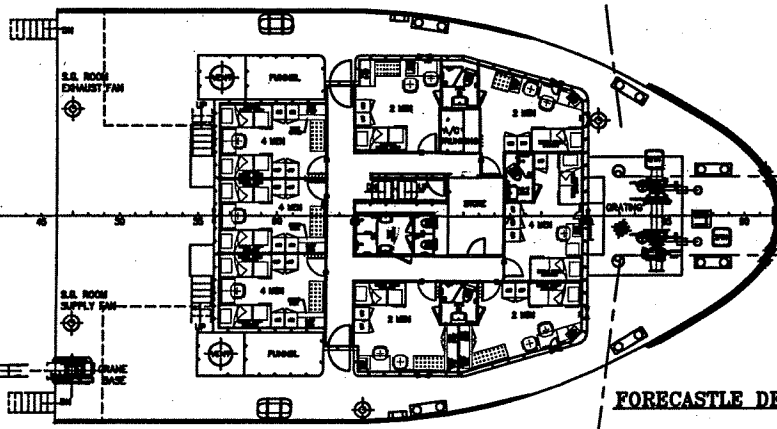
BELOW TANK TOP



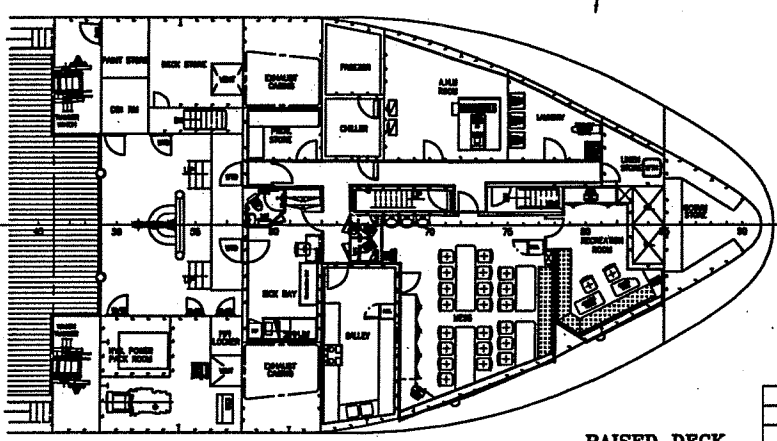
NAV. BRIDGE DECK



BRIDGE DECK



FORECASTLE DECK



RAISED DECK

PRINCIPAL PARTICULARS

LENGTH O.A.	60.00m
LENGTH W.L.	58.74m
BEAM MLD.	16.00m
DEPTH MLD.	5.50m
DRAFT DESIGNED/max.	4.20m/4.85m
DWT	1150t/1650t
COMPLEMENT	33 MEN
POTABLE WATER	500m ³ (Approx)
F.O.	522m ³ (Approx)
D.W./S.W.B.	550m ³ (Approx)
LIQUID MUD	177m ³
BASE OIL/BRINE/D.W.	159m ³
FOAM	10m ³
DISPERSANT	10m ³
DRY BULK	170m ³
DIRTY OIL	11m ²
BILGE HOLDING	11m ²
DECK SPACE	400m ² (approx.)
DECK CARGO	600tonnes (approx.)

20.05.08	COMPLEMENT CHANGED FROM 28MEN TO 33MEN	A	ZHAN		
DATE	MODIFICATION	REV	BY		
SHIP: 60m STRAIGHT SUPPLY VESSEL					
TITLE: General Arrangement					
OWNER					
BUILDER	EASTERN MARINE SHIPBUILDING SDN BHD YARD NO. EM78				
CLASS	BY				
CONAN WU & ASSOCIATES					
NAVAL ARCHITECTS					
INFORMATICS BLDG. 5 INTERNATIONAL BUSINESS PARK, JURONG EAST, SINGAPORE 609914					
TEL: (65) 6562-1138 FAX: (65) 6562-1238 (65) 6562-0123 E-MAIL: conanwu@shiptop.com.sg					
DRAWN	CHECKED	APPROVED	SCALE	DRAWING NO.	REV
ZHAN			1:150	C3865E/G-1	A
13.06.07					

THIS DRAWING AND THE INFORMATION CONTAINED HEREIN ARE SUPPLIED ON THE UNDERSTANDING THAT THEY ARE THE EXCLUSIVE PROPERTY OF CONAN WU & ASSOCIATES. THEY MUST NOT BE USED OR REPRODUCED IN WHOLE OR IN PART WITHOUT PERMISSION IN WRITING.