

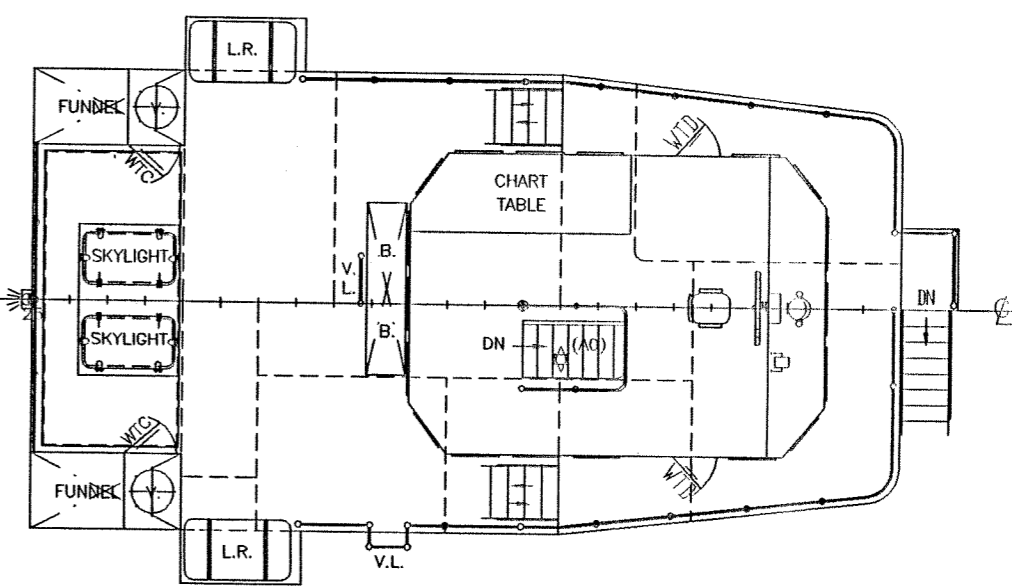
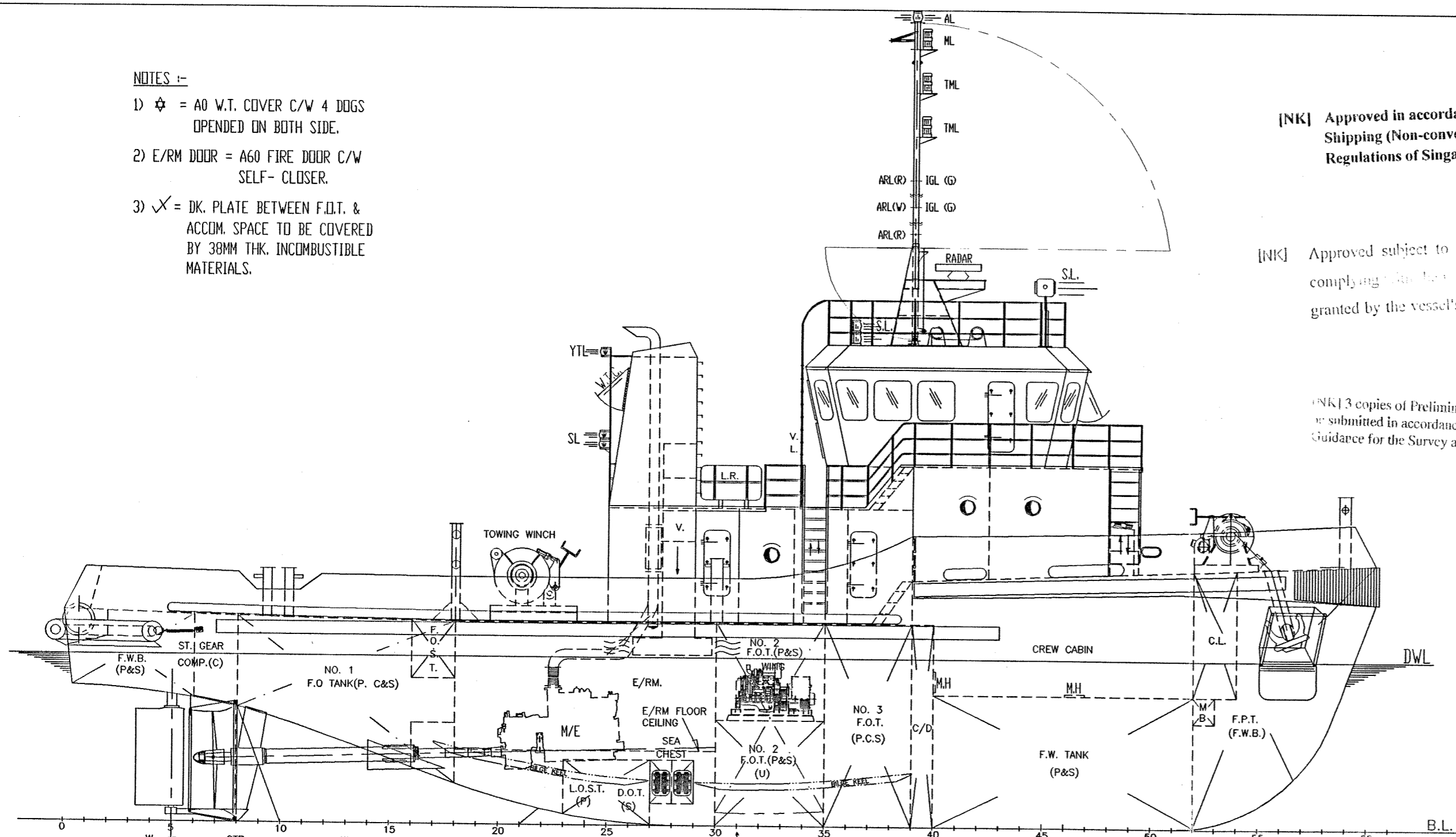
NOTES :-

- 1) ☆ = AO V.T. COVER C/W 4 DOGS OPENED ON BOTH SIDE.
- 2) E/RM DOOR = A60 FIRE DOOR C/W SELF-CLOSER.
- 3) ✓ = DK. PLATE BETWEEN F.O.T. & ACCOM. SPACE TO BE COVERED BY 38MM THK. INCOMBUSTIBLE MATERIALS.

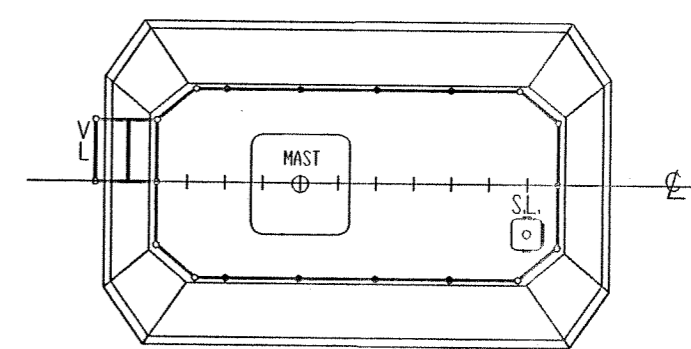
[NK] Approved in accordance with Merchant Shipping (Non-convention Ships) Safety Regulations of Singapore.

[NK] Approved subject to the relevant exemptions from complying with the provisions of COLREG '72 as granted by the vessel's Flag Administration.

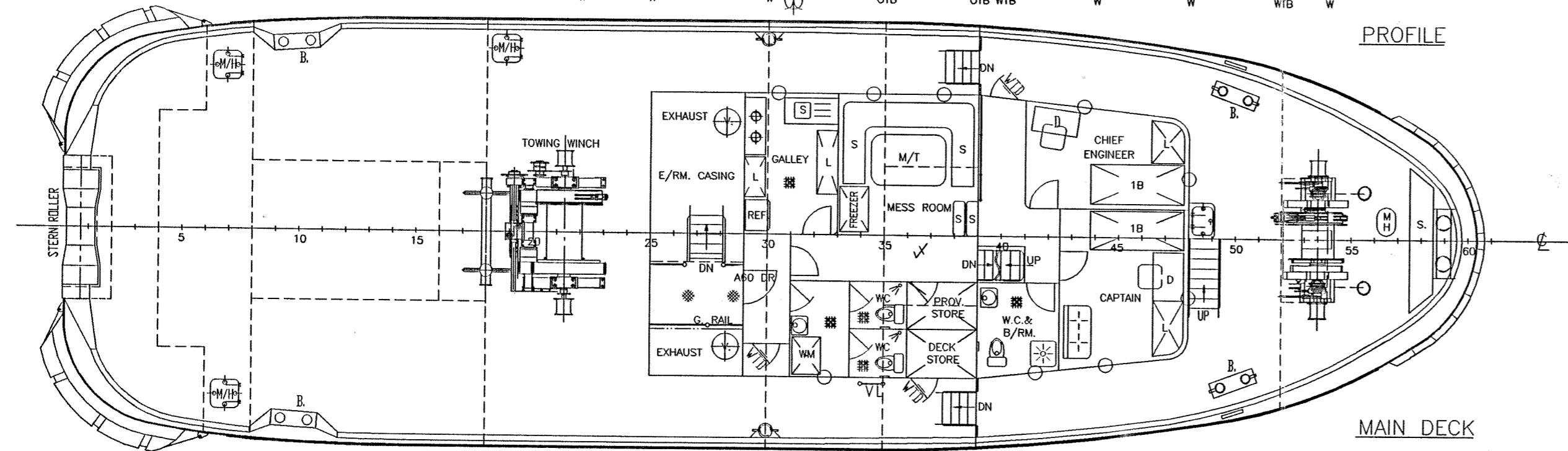
[NK] 3 copies of Preliminary Stability Booklet are to be submitted in accordance with Part B 2.1.2.3 of Guidance for the Survey and Construction of Steel Ships



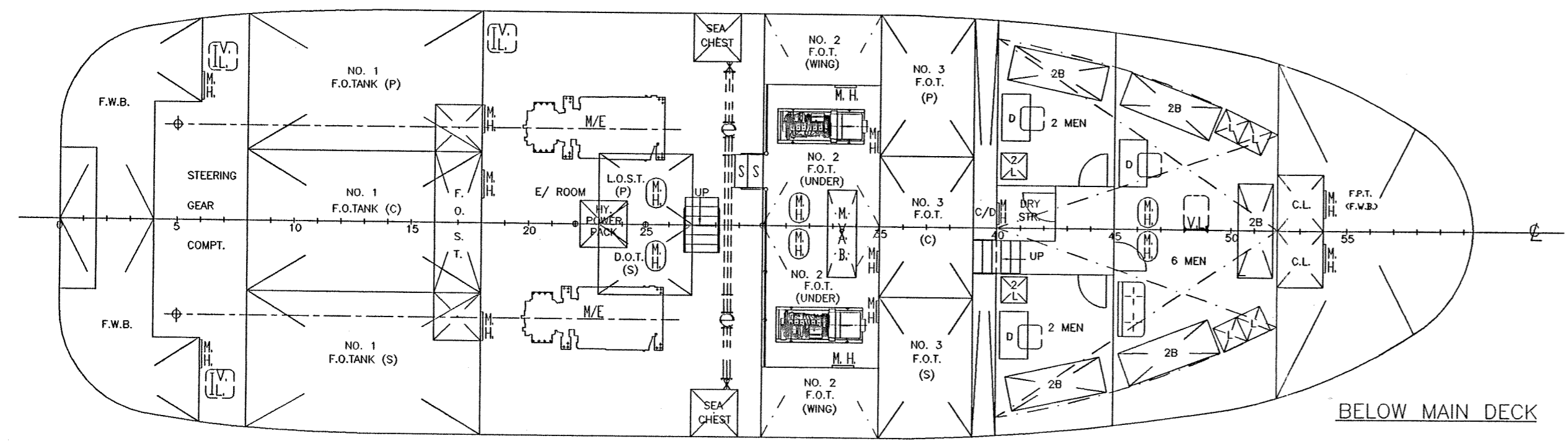
BRIDGE DECK



WHEELHOUSE TOP



MAIN DECK



BELOW MAIN DECK

PRINCIPAL PARTICULAR :-

- L. D. A. :- 30.20 M (99.08 FT)
- L. B. P. :- 27.20 M (89.24 FT)
- BEAM MLD :- 9.00 M (29.53 FT)
- DEPTH MLD :- 4.60 M (15.09 FT)
- DESIGNED DRAFT :- 3.80 M (12.47 FT)
- CREWS :- 12 MEN
- FUEL OIL :- 245.00 M³ (100 % FULL)
- FRESH WATER :- 74.00 M³ (100 % FULL)
- BALLAST :- 73.50 M³ (100 % FULL)
- L.D.S.TANK :- 3.50 M³ (100 % FULL)
- DIRTY OIL TANK :- 3.50 M³ (100 % FULL)
- MAIN ENGINE :- 2 X CUMMINS KTA-38-M2
1200 BHP / 1800 RPM EACH
- GEAR BOX :- REINTJES WAF 562 L1
5.947: 1 RATIO
- GENERATOR :- 2 X 80 KW EACH
- FREE RUNNING SPEED :- 12 KNOTS (APPROX.)
- DESIGNED B.P. :- 32 TONNES (APPROX.)

[NK] L by NK Rules: 28.416

[NK] ds : 3.800

This drawing and the information contained herein is supplied on the understanding that they are the exclusive property of WANG SANG & ASSOCIATES SDN. BHD. They must not be used or reproduced in whole or in part without permission in writing.



DATE	MODIFICATION	REV	BY
DESIGNER	WANG SANG & ASSOCIATES SDN. BHD. (COMPANY NO.587290-W) (MARINE DESIGNS ENGINEERING & SUPERVISION) 2nd FLOOR, 4C, LORONG JUNG KONG, 96000 ; GPO L/B 18, NCS 50212, 96009 SIBU, SARAWAK, MALAYSIA TEL:- 084-331582 (D), FAX:- 084-322098 EMAIL : richwg@pc.jaring.my / wangsang@streanix.com		
SHIP			
30 M T. S. TUG			
TITLE			
GENERAL ARRANGEMENT			
OWNER	VITAWANI SHIPBUILDING S/B, MIRI.	YD. NO.	VT 5
BUILDER	NK NS * (TUG)	P.O.R.	S'PURE
CLASS	UNRESTRICTED AREA	JOB. NO.	07608
TRADE		DRG. NO.	
DRN	L L U K	CHECKED	PAUL WONG
26/5/2008	20-06-2008	20-06-2008	
		SCALE	1 : 100
			WS01208-08(3)-G

30M08(3)08(3)-G